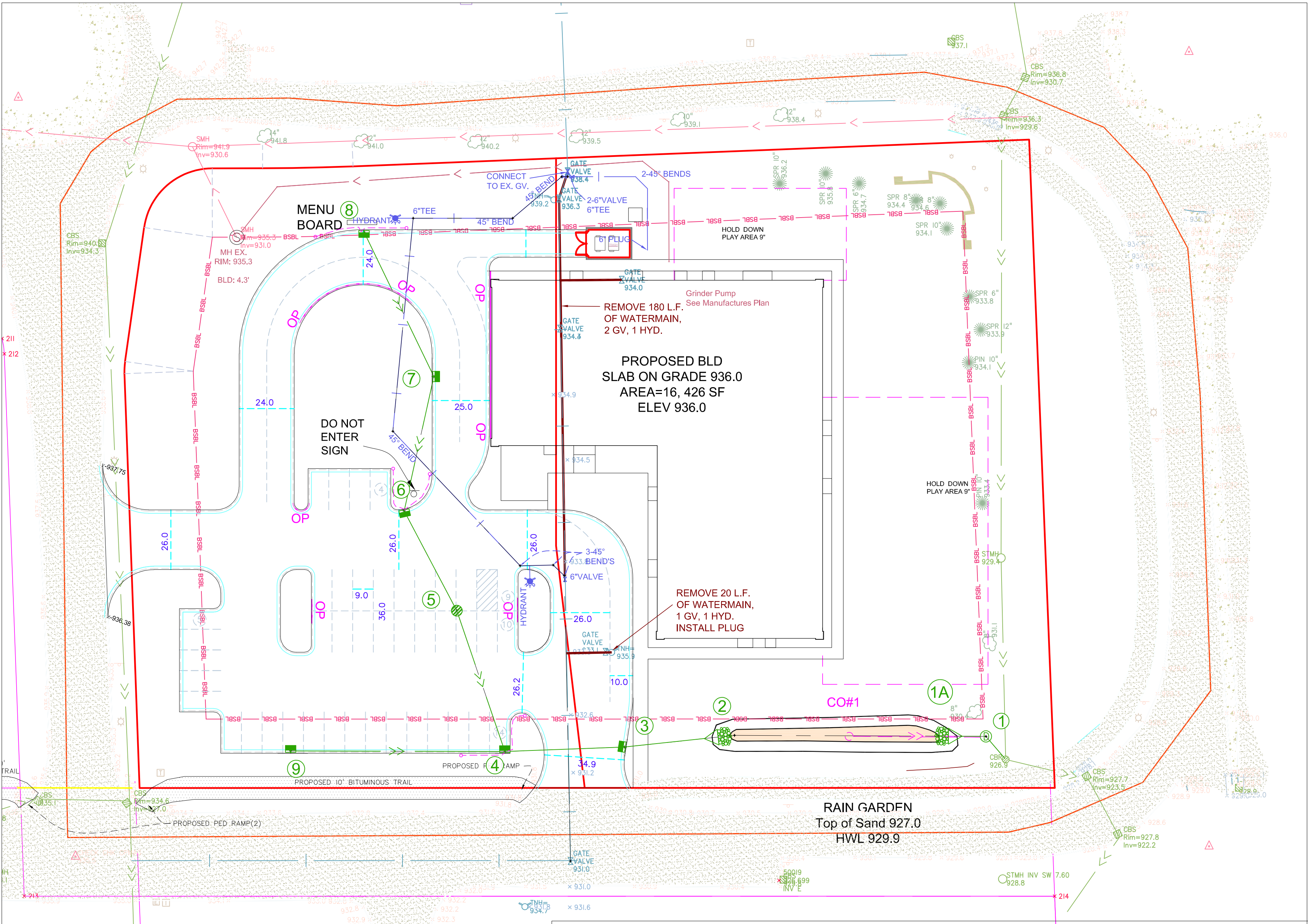
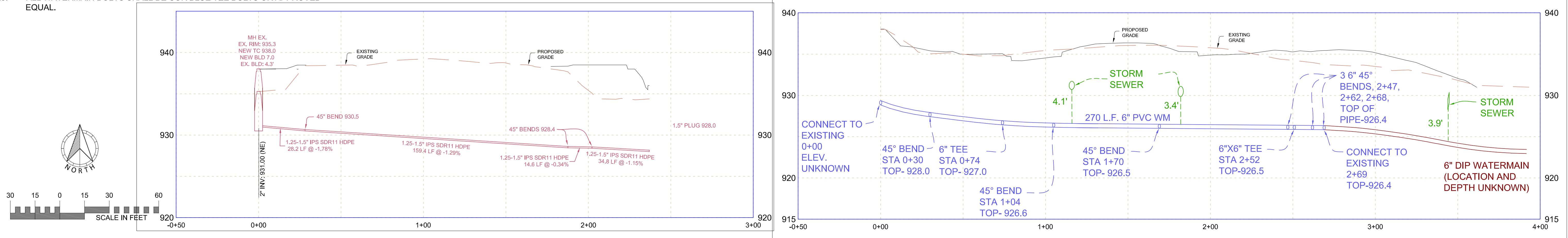


- SANITARY SEWER AND WATERMAIN NOTES:
- ALL SANITARY SEWER SERVICES SHALL BE SCHEDULE 40.
 - REFER TO DETAIL SHEETS TO SEE STRUCTURE DETAILS.
 - AFTER FILTRATION BASINS ARE EXCAVATED DO NOT DRIVE ON OR STORE MATERIALS IN THAT AREA.
 - ALL HYDRANT BENCHMARKS ARE TOP NUT OF HYDRANT.
 - ALL TIES AND DISTANCES ARE TO THE CENTER OF SURFACE STRUCTURES.
 - ALL HYDRANTS AND HYDRANT GATE VALVES ARE RESTRAINED AND TIED BACK TO THE WATERMAIN TEE BY MEANS OF APPROVED MEGALUGS UNLESS OTHERWISE NOTED. SEE DETAIL.
 - ALL VALVES ON THE WATERMAIN FOR THIS PROJECT SHALL BE GATE VALVES. NO BUTTERFLY VALVES SHALL BE USED ON THE WATERMAIN FOR THIS PROJECT.
 - CITY OF COLOGNE STANDARD DETAILS SHALL APPLY. IF NOT ADDRESSED BY THE CITY DETAILS, THEN THE CITY ENGINEERS ASSOCIATION OF MINNESOTA STANDARD SPECIFICATIONS, 2018 ADDITION. " SHALL GOVERN.
 - INSTALL HYDRANTS 5' BEHIND CURB (TYPICAL).

- POLY WRAP ALL HYDRANT BARRELS
- BAG ALL HYDRANTS UNTIL THEY ARE TESTED AND PUT IN SERVICE.
- ALL 4"-12" WATERMAIN SHALL BE PVC C900 (DR25).
 - MECHANICAL BALLS SHALL BE INSTALLED IN SANITARY SEWER AT CONNECTION POINTS FOLLOWING INSTALLATION OF PIPE TO PROTECT EXISTING LINES FROM DEBRIS, & SEDIMENT INFILTRATION. BALLS SHALL REMAIN UNTIL LINES ARE TELEVIEWED & ACCEPTED BY THE CITY.
 - THE CONTRACTOR SHALL CONTACT THE SEWER AND WATER DEPARTMENT AT LEAST 48 HOURS PRIOR TO ANY PUBLIC SEWER/WATERMAIN CONNECTION.
 - ALL SANITARY SEWER MANHOLE ADJUSTING RINGS INSTALLATIONS SHALL HAVE POLYMER II BARRIERS BY "STRIKE PRODUCTS" OR APPROVED EQUAL INSTALLED.
 - CONCRETE ADJUSTING RINGS SHALL BE USED ON ALL MANHOLES AND CATCH BASINS.
 - ALL BELOW GRADE BOLTS SHALL BE INSTALLED AS PER CITY OF COLOGNE DETAILS. IF CITY DETAILS DO NOT ADDRESS THEN USE CITY ENGINEERS ASSOCIATION OF MINNESOTA STANDARD SPECIFICATIONS, 2018 ADDITION.
 - RESTRAIN VERTICAL BENDS WITH STAINLESS STEEL TIE RODS PER CITY ENGINEERS ASSOCIATION OF MINNESOTA STANDARD SPECIFICATIONS, 2018 ADDITION.
 - WATER SERVICES SHALL BE 1" IPS POLYETHYLENE PIPE, SANITARY SERVICES SHALL BE 4" SCH 40 PVC.
 - REMOVE AND SALVAGE HYDRANTS AND VALVES AS POSSIBLE.
 - CHIMNEY SEALS SHALL BE USED IN ACCORDANCE with City Standard Details
 - ALL EXPOSED BOLTS ON HYDRANTS AND GATE VALVES SHALL BE STAINLESS STEEL.
 - DIP FITTINGS SHALL BE FUSION BONDED EPOXY COATED.
 - SALVAGED HYDRANTS AND VALVES SHOULD BE DELIVERED TO THE CITY PUBLIC WORKS DEPARTMENT, UNLESS OTHERWISE APPROVED BY THE CITY.
 - ALL WATERMAIN BOLTS SHALL BE COR BLUE TEE BOLTS OR APPROVED EQUAL.



Watermain



| DRAWING NAME | NO. | BY | DATE | REVISION |
|--------------|-----|-----|-----------|-----------------------------|
| COLOGNE.DWG | 1 | DLS | 4/13/2022 | CITY AND WATERSHED COMMENTS |
| DRAWN | 2 | DLS | 5/12/2022 | CITY COMMENTS |
| DLS | | | | |
| CHECKED | | | | |
| DLS | | | | |
| DATE | | | | |
| 02/28/2022 | | | | |

USE (INCLUDING COPYING, DISTRIBUTION, AND/OR CONVEYANCE OF INFORMATION) OF THIS PRODUCT IS STRICTLY PROHIBITED WITHOUT SATHRE-BERGQUIST, INC.'s EXPRESS WRITTEN AUTHORIZATION. USE WITHOUT SAID AUTHORIZATION CONSTITUTES AN ILLEGITIMATE USE AND SHALL THEREBY INDEMNIFY SATHRE-BERGQUIST, INC. OF ALL RESPONSIBILITY. SATHRE-BERGQUIST, INC. RESERVES THE RIGHT TO HOLD ANY ILLEGITIMATE USER OR PARTY LEGALLY RESPONSIBLE FOR DAMAGES OR LOSSES RESULTING FROM ILLEGITIMATE USE.

I HEREBY CERTIFY THAT THIS PLAN OR SPECIFICATION WAS PREPARED BY ME OR UNDER MY DIRECT SUPERVISION AND THAT I AM A DULY REGISTERED PROFESSIONAL ENGINEER UNDER THE LAWS OF THE STATE OF MINNESOTA.

Daniel L. Schmidt

Daniel L. Schmidt, P.E.
Date: 03-04-2022 Lic. No. 26147



SATHRE-BERGQUIST, INC.
150 SOUTH BROADWAY WAYZATA, MN. 55391 (952) 476-6000

CITY PROJECT NO.

**COLOGNE,
MINNESOTA**

**SANITARY SEWER AND
WATERMAIN PLAN**
STARS EARLY LEARNING ACADEMY
COMMUNITY DEVELOPMENT

FILE NO.
16572-003

3

13