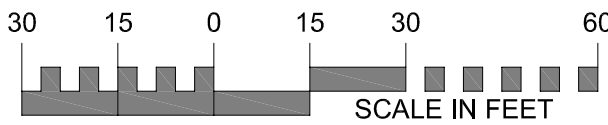
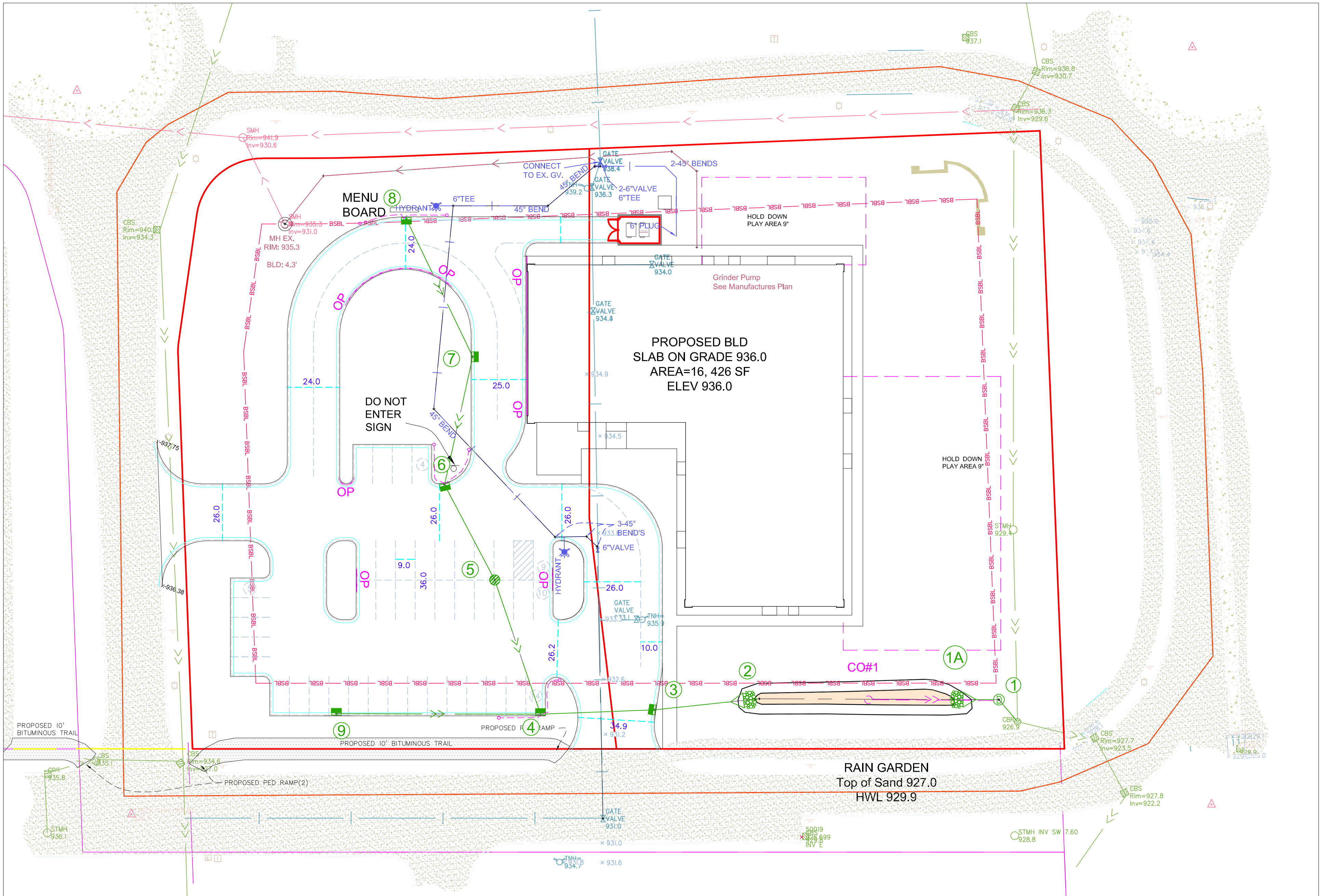


STREET NOTES:

- ALL DIMENSIONS ARE FROM BACK OF CURB TO BACK OF CURB. CURB DIMENSIONS ARE BACK TO BACK. ALL CURB IS B612 EXCEPT CATCH BASIN TRANSITIONS AND THE PORTION ADJACENT TO THE BUILDING. .
- ALL SIDEWALKS SHALL BE 4". PEDESTRIAN RAMPS ARE REQUIRED IN THIS PHASE OF CONSTRUCTION AS PER MNDOT DETAIL.
- ALL STORM SEWER STRUCTURES SHALL BE EXPOSED DURING STRING LINE OF CURB TO ENSURE PROPER FIT WITH CONCRETE RINGS.
- INSTALL TWO TEMPORARY BARRICADES SIDE BY SIDE TO CLOSE OFF THE ENTRANCE TO THE THE STREET WHEN NOT IN USE DURING CONSTRUCTION.
- LOT STRIPING - PARKING LINES TO BE SHERWIN WILLIAMS SETFAST CHLORINATED RUBBER ZONE MARKING PAINT TM5126 OR APPROVED EQUAL. PAINT TO BE APPLIED IN ACCORDANCE WITH MANUFACTURES SPECIFICATIONS.
- ALL GRADES SHOWN ARE TOP BACK CURB UNLESS OTHERWISE SHOWN.
- CURB MARKED AS "OP" IS OUTPUT GUTTER.
- STREET SECTION

BITUMINOUS WEAR COURSE	1.5"
BITUMIOUS BASE COURSE	2"
AGGREGATE BASE(MnDOT CLASS 5)	7"
SAND SUBBASE(MnDOT SELECT)	12"



DRAWING NAME	NO.	BY	DATE	REVISION
COLOGNE.DWG	1	DLS	4/13/2022	CITY AND WATERSHED COMMENTS
DRAWN	2	DLS	5/12/2022	CITY COMMENTS
DLS				
CHECKED				
DLS				
DATE				
02/28/2022				

USE (INCLUDING COPYING, DISTRIBUTION, AND/OR CONVEYANCE OF INFORMATION) OF THIS PRODUCT IS STRICTLY PROHIBITED WITHOUT SATHRE-BERGQUIST, INC.'s EXPRESS WRITTEN AUTHORIZATION. USE WITHOUT SAID AUTHORIZATION CONSTITUTES AN ILLEGITIMATE USE AND SHALL THEREBY INDEMNIFY SATHRE-BERGQUIST, INC. OF ALL RESPONSIBILITY. SATHRE-BERGQUIST, INC. RESERVES THE RIGHT TO HOLD ANY ILLEGITIMATE USER OR PARTY LEGALLY RESPONSIBLE FOR DAMAGES OR LOSSES RESULTING FROM ILLEGITIMATE USE.

I HEREBY CERTIFY THAT THIS PLAN OR SPECIFICATION WAS PREPARED BY ME OR UNDER MY DIRECT SUPERVISION AND THAT I AM A DULY REGISTERED PROFESSIONAL ENGINEER UNDER THE LAWS OF THE STATE OF MINNESOTA.

*Daniel L. Schmidt*  
Daniel L. Schmidt, P.E.  
Date: 03-04-2022 Lic. No. 26147



**SATHRE-BERGQUIST, INC.**  
150 SOUTH BROADWAY WAYZATA, MN. 55391 (952) 476-6000

CITY PROJECT NO.

---

**COLOGNE,  
MINNESOTA**

**PARKING LOT PLAN**  
**STARS EARLY LEARNING ACADEMY**  
**COMMUNITY DEVELOPMENT**

FILE NO.  
16572-003

2

13